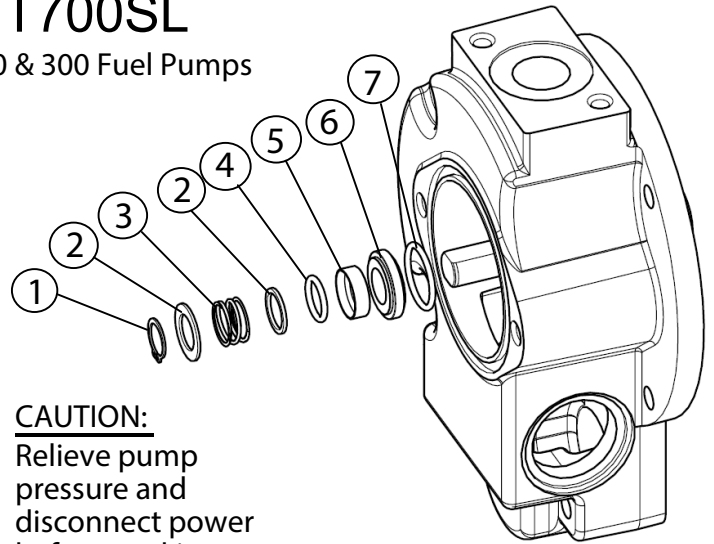




Seal Kit KIT700SL

for Fill-Rite series 700 & 300 Fuel Pumps



No.	Description	Qty
1	Retaining ring	1
2	Washer (plated)	2
3	Spring (ss)	1
4	-114 O-ring (FKM)	1
5	Metal Seal Ring (ss)	1
6	Carbon Seal Ring	1
7	-120 O-ring (FKM)	1

CAUTION:
Relieve pump pressure and disconnect power before working on pump. To ease installation the components have been assembled in order of installation on the cardboard tube.

INSTRUCTIONS. Carefully remove old seal components and clean out pump seal bore. Pump seal bore and shaft must be clean and free of scratches for proper seal performance. Follow the steps illustrated below to install new seal.

Step 1) Pull the yellow cap off the end of the tube where the seals are located.

Install O-ring seal (7) as indicated above.

Step 2) Place the tube over the motor shaft, seal end first as shown. Using the cardboard collar on the tube, push all the seals and other components onto the motor shaft.

Step 3) Be certain all the components are installed on the shaft. Press them firmly in place using the collar.

Step 4) Using retaining clip pliers, push retaining clip onto the shaft until you feel it snap into the groove on the shaft.